

/	解説
/	各問題に 記載あり

中2理科電流と電圧 復習1

NO1~NO6-④

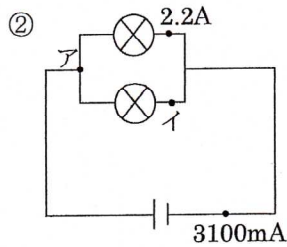
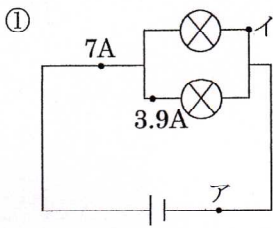
NAME	間違え

問1 次の電流、電圧を求めよ。

NO6

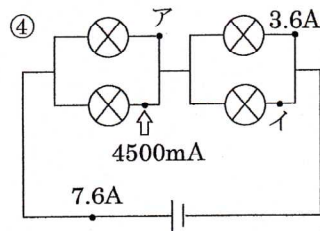
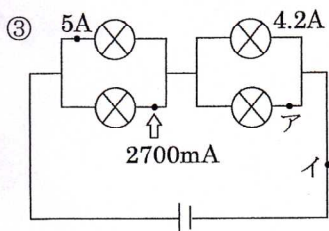
問2 次の合成抵抗を求めよ。

NO14



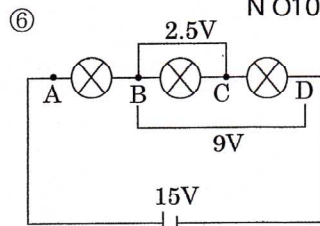
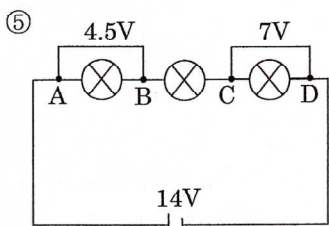
ア **7** A イ **3100** mA

ア **3.1** A イ **900** mA



ア **3.5** A イ **7700** mA

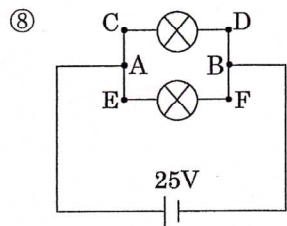
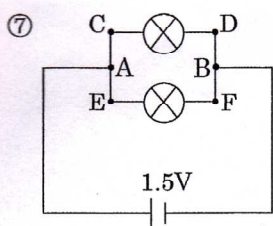
ア **3.1** A イ **4000** mA



NO10

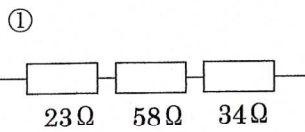
BC **2.5** V AC **7** V BD **9.5** V AD **14** V

CD **6.5** V AB **6** V AC **8.5** V AD **15** V

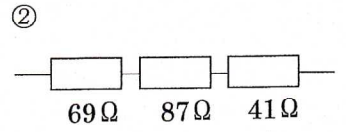


AB **1.5** V CD **1.5** V EF **1.5** V

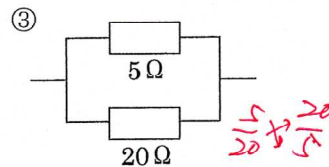
AB **25** V CD **25** V EF **25** V



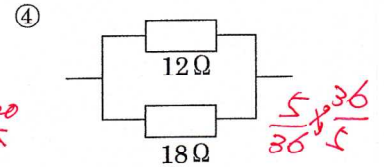
115 Ω



197 Ω



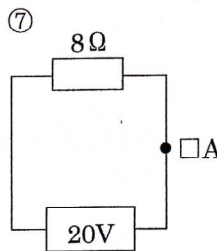
4 Ω



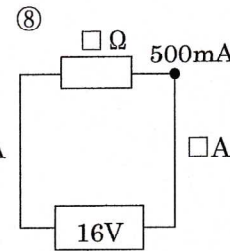
7.2 Ω

問3 次の電流・電圧・抵抗を求めよ。

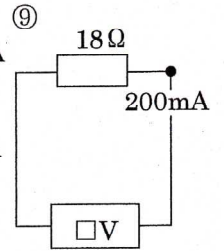
NO14



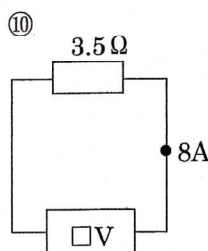
2.5 A



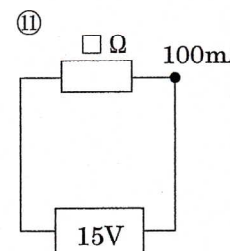
32 Ω



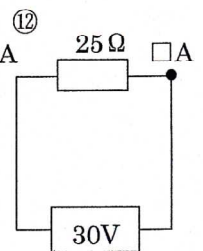
3.6 V



28 V



150 Ω

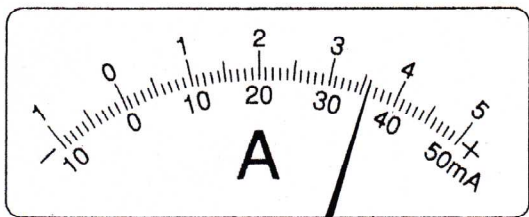


1.2 A

問4 次の電流計と電圧計の値を求めよ。

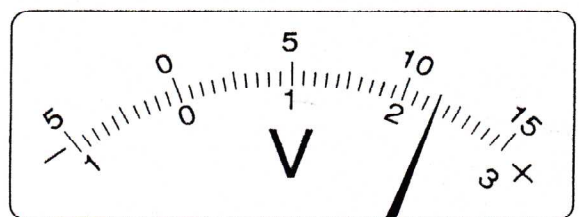
NO11

NO12



50mA 500mA 5A

36 **360** **3.6**



300V 15V 3V

230 **11.5** **2.3**