

/	解説
/	問題に記載

中2理科電流と電圧

オームの法則基本計算までの復習③

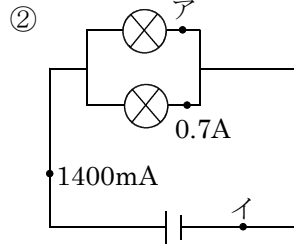
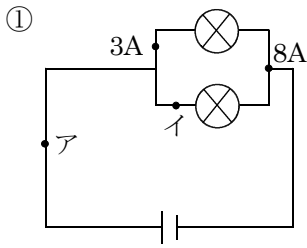
NAME	間違い

問1 次の電流、電圧を求めよ。

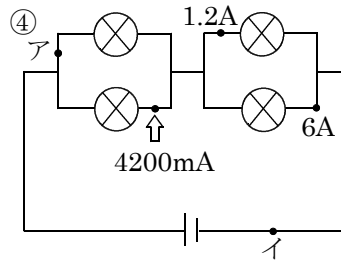
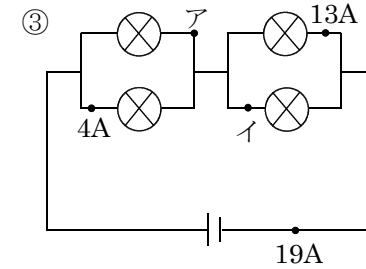
NO2,7

問2 次の合成抵抗を求めよ。

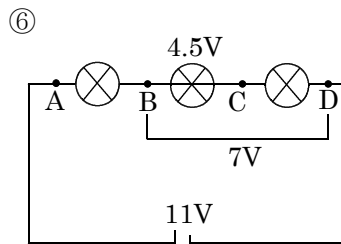
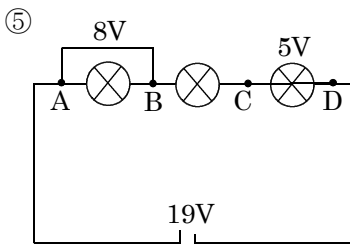
NO12



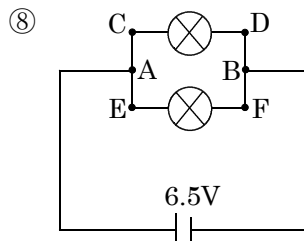
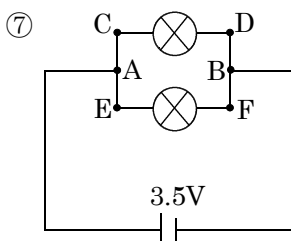
ア	イ
A	mA



ア	イ
A	mA

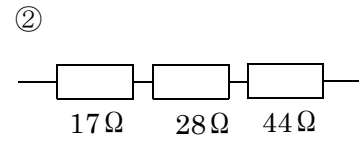
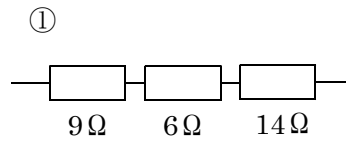


BC	AC	BD	AD
V	V	V	V



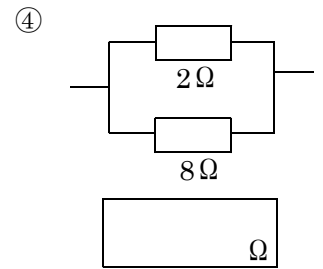
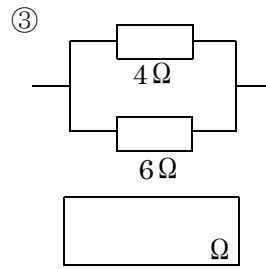
AB	CD	EF
V	V	V

AB	CD	EF
V	V	V



Ω

Ω

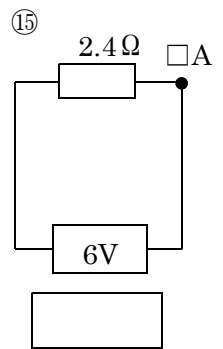
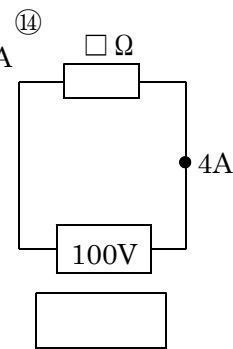
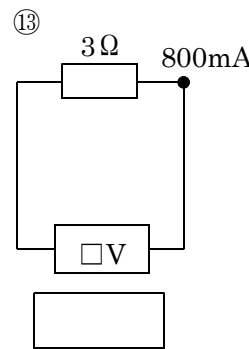


Ω

Ω

問3 次の電流・電圧・抵抗を求めよ。

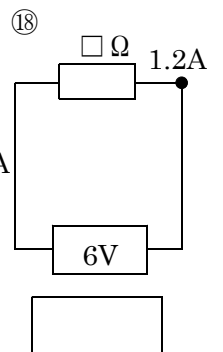
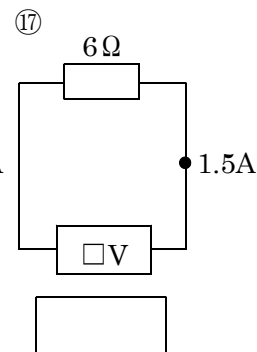
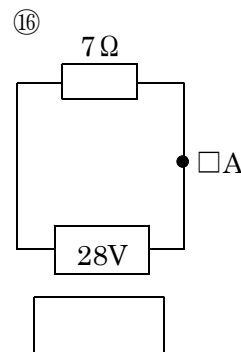
NO12



V

A

Ω

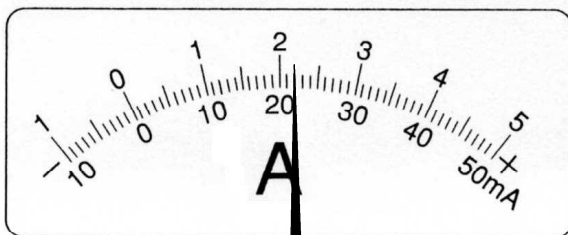


A

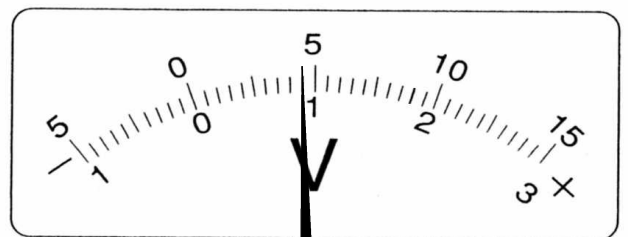
V

Ω

問4 次の電流計と電圧計の値を求めよ。 NO9,10



50mA	500mA	5A



300V	15V	3V